

## OUR VISION

To be the Premier Educator for Service Excellence

## OUR MISSION

To inspire Passion for Service and Contribution to Society through Excellence in Continuous Education

## OUR VALUES

Responsibility, Integrity, Passion and Excellence (RIPE)

## OUR CULTURE

An Open and Conducive Learning Environment, With Mutual Respect and Professionalism to Build A High Performance Organization



CSM ACADEMY  
INTERNATIONAL

## COURSE MODULES & SYNOPSIS

### Fundamental of Biomedical Science

This module aims to provide an overview and integrated approaches of biomedical science in the study of the human body, its structure and function in health and disease. Biomedical science requires an understanding of basic human immune system, physiology, medical biochemistry, microbiology, infectious diseases, pharmacology, cell and molecular biology, and neuroscience. Students will gain the basic theoretical and practical experience in our academy.

### Introduction to Genetics and Molecular Cell Biology (IGMC)

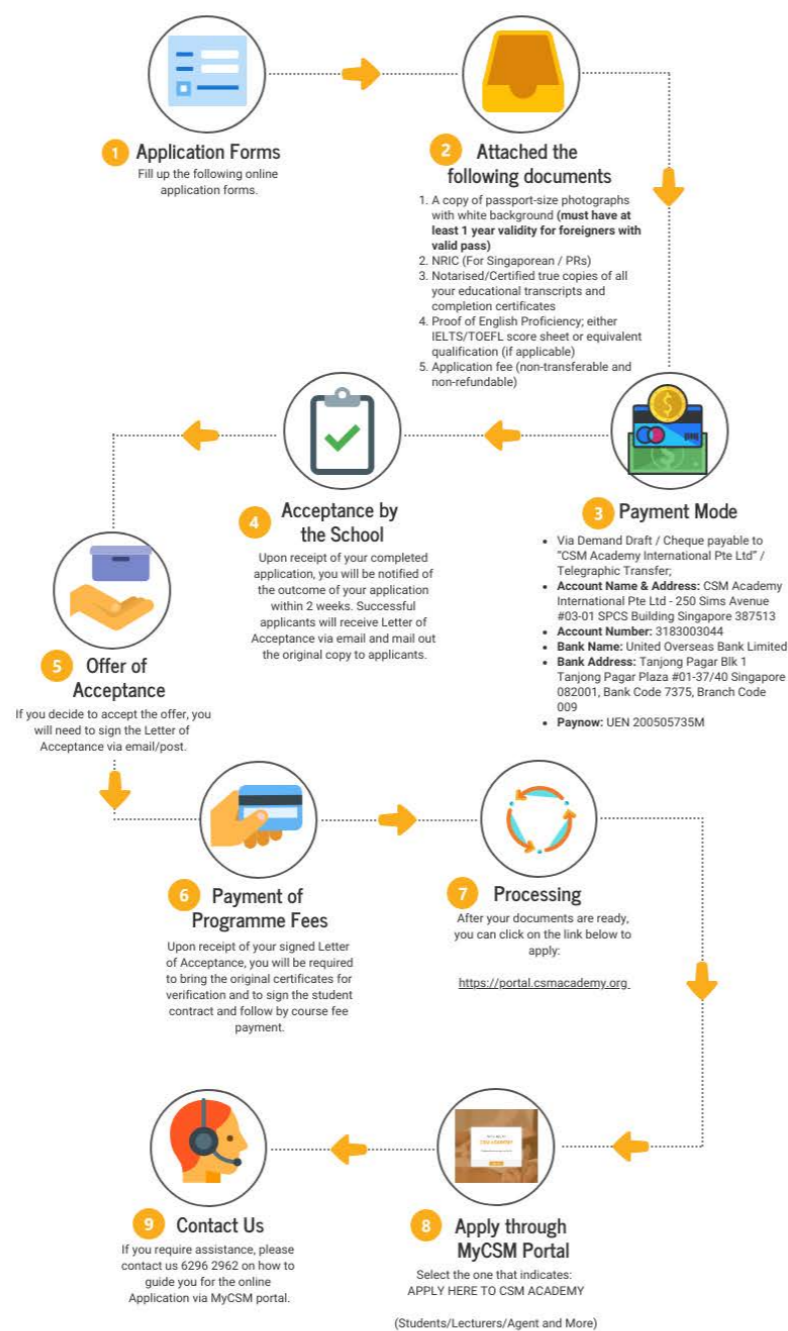
This module focuses on the basic understanding and appreciation of life and life processes at the molecular and cellular level. Students explore cellular structures and processes and understand the structure and function of the DNA molecule. Application of DNA in gene cloning, gene therapy will be studied. Further topics on genetic code and the central dogma are also covered. The module also connects the concept of genes as the molecule of heredity and DNA as the genetic material. It also introduces the basic concepts of human genetics in relation to health and disease.

### Understanding Human Health Disease (UHHD)

This unit connects the understanding of human body in relation to several diseases processes. Most significant and crucial form of human diseases will be discussed in detail to provide an integrated approach with the aim to describe a broad range of knowledge and scientific principles as they apply to understanding the cause of diseases.

Insight into the contribution specific cell and organ properties and systems biology for example will be drawn upon to understand the effects of disease on the human body. Throughout the module, ethical principles and considerations that are of particular importance to research in Biomedical Sciences will be identified and discussed.

## Step by Step Guide on How to Apply



CERTIFICATE  
**BIOMEDICAL  
SCIENCE**

# BEHIND EVERY BREAKTHROUGH

IS A TEAM OF SELFLESS INDIVIDUALS.



Certificate No: EDU-2-2105  
Validity: 31-08-2017 to 30-08-2021  
CSM Academy International  
ERF Registration No. 200505735M  
ERF Validity: 20/5/2018 - 19/5/2022

To apply: Visit us at <http://csmacademy.edu.sg/> or our office

CSM Academy International Pte. Ltd.  
250 Sims Avenue, #03-01, SPCS Building  
Singapore 387513

Tel: +(65)629 629 62  
Email: [csmsupport@csmacademy.edu.sg](mailto:csmsupport@csmacademy.edu.sg)  
Website: [www.csmacademy.edu.sg](http://www.csmacademy.edu.sg)

CSM Academy International  
ERF Registration No. 200505735M  
ERF Validity: 20/5/2014 - 19/05/2018  
[www.csmacademy.edu.sg](http://www.csmacademy.edu.sg)



## DIPLOMA IN BIOMEDICAL SCIENCE



### INTRODUCTION - REAL LAB, REAL EXPERIENCE.

The Certificate in Biomedical Science have been designed in such a way that students will benefit from state-of-the-art knowledge and skills, critical thinking and a focused training on innovation and design thinking that will be of value to the existing and emerging biomedical industries in Singapore, the wider Asian market and beyond.

The programme aims to provide knowledge and experience leading to career opportunities in a wide array of areas including biomedical, pharmaceutical, environmental monitoring, public health, agrochemical and food sectors. With the increased importance of globalisation of education and training, these programmes will incorporate, where appropriate, issues of global significance.

In an effort to best match the needs of industry in this area, the Certificate, Diploma and Advanced Diploma in Biomedical Science have a significant focus on skills development and employer-led, industry-required knowledge acquisition in areas such as technology and knowledge exchange, IPR, entrepreneurship, health & safety, marketing, growth strategies and innovation - these to be presented and developed through business planning exercises, simulations and relevant case studies.

### ABOUT CSM ACADEMY

CSM Academy was established since 2005 as a Private Education Institute to deliver Service Management programmes with a major focus on healthcare services education. It delivers multi-level courses ranging from Certification and Diplomas to Bachelor's and Master's Degrees. Other than healthcare, CSM Academy also provides educational courses across a wide range of other disciplines including biomedical research, digital media, and hospitality & tourism.

CSM Academy emphasises skills competency, applied workplace knowledge and service excellence, developing several of their own intellectual property programmes in Aged Care, Therapy Services and Biomedical Science, all designed to help students make a positive impact in the lives of someone else.

### COURSE DURATION

Full time: 3 months (3-hour lessons/day, 5 days/week)  
Part time: 4 months (3-hour lessons/day, 3 days/week)

### DELIVERY MODE

Classroom-based lectures and laboratory sessions.  
Face-to-face mode of delivery.

### COURSE COMMENCEMENT

January, April, July, October

Note:

- A minimum number of 15 students for the commencement of the class.
- Students will be informed 2 weeks before the commencement of the class.

### COURSE DEVELOPER AND AWARDDING BODY

CSM Academy International, Singapore

### ASSESSMENT METHODOLOGY

A combination of examinations, critical analysis and synthesis or laboratory reports, abstracts, business planning exercises, simulation and case studies will be among the assessment tools.

Note:- In case students fail the main examination of a particular module, they are allowed to sit for "one" supplementary assessment with payment of the appropriate fee\*. Students are to re-take the module, shall they fail the supplementary assessment. Modules are independent of each other.

\* Refer to the Miscellaneous Fees

### GRADUATION REQUIREMENTS

Students must complete and pass all 3 modules each for the Certificate program to be awarded Certificate in Biomedical Science, Diploma and Advanced Diploma in Biomedical Science respectively. Attendance requirement for local students is 75% and for international students is 90% in any month of the course.

### CAREER OPPORTUNITY

Employment opportunities include technical posts in a variety of biomedical science specialists laboratories within the hospital environment (haematology, medical microbiology, clinical biochemistry, pathology, etc.) or technical posts within pharmaceutical companies or research groups (academic and industrial), for example:



Cardiac Technologist



Medical Technologist



Research Assistant



Sales and Marketing Personnel for Health Sectors

The topics covered by the curriculum are sufficiently broad to allow students to also diversify into allied disciplines such as biological sciences, biotechnology and life sciences. Students would also have the relevant knowledge and skills to consider further education and training in a range of health-related programme (physiotherapy, radiography, nursing).



### ENTRY REQUIREMENT

#### For Certificate:

##### Minimum Entry Requirements:

- Obtained at least a C6 at GCE N levels in any subjects or equivalent. <sup>or</sup>
- NITEC in any disciplines.

#### English Language Requirement:

- At least a C6 at GCE N level or Academic IELTS 4.5 or equivalent.

### FEES

#### Application Fee

(Non-Refundable and non-transferrable)  
Local Students: S\$50  
International Students: S\$600

#### Course Fee

For local students: S\$ 1,600.00 per module totalling S\$ 9,600.00 (6 modules) – before GST

For International students: S\$10,500 (before GST)

#### Note:

Students are required to pay for the following miscellaneous fees on modules with lab sessions:

- S\$30 for Lab Coat ((before GST)
- S\$150 for material cost for modules with lab experiment (before GST)

#### Insurance Fees

Fee Protection Scheme\*\*\*: Subject to prevailing market rate  
Medical Insurance Fee\*\*\*\*: Subject to prevailing market rate

\*\*\* The Fee Protection Scheme (FPS) serves to protect students' paid fees.

\*\*\*\* It is compulsory for all local and international students to purchase medical insurance which is valid throughout their course of studies with the CSM Academy International. Local students (Singaporeans, PRs & Non-student's Pass holders) may opt-out for this scheme if they can provide the proof of adequate medical insurance coverage in Singapore.

#### Note:

- Payment of fees is in Singapore Dollars.
- Payment method only by Cheque/ Nets/ Telegraphic Transfer

#### Miscellaneous Fees

Please ask for a copy from our Programme Executives or Recruitment Agents.